

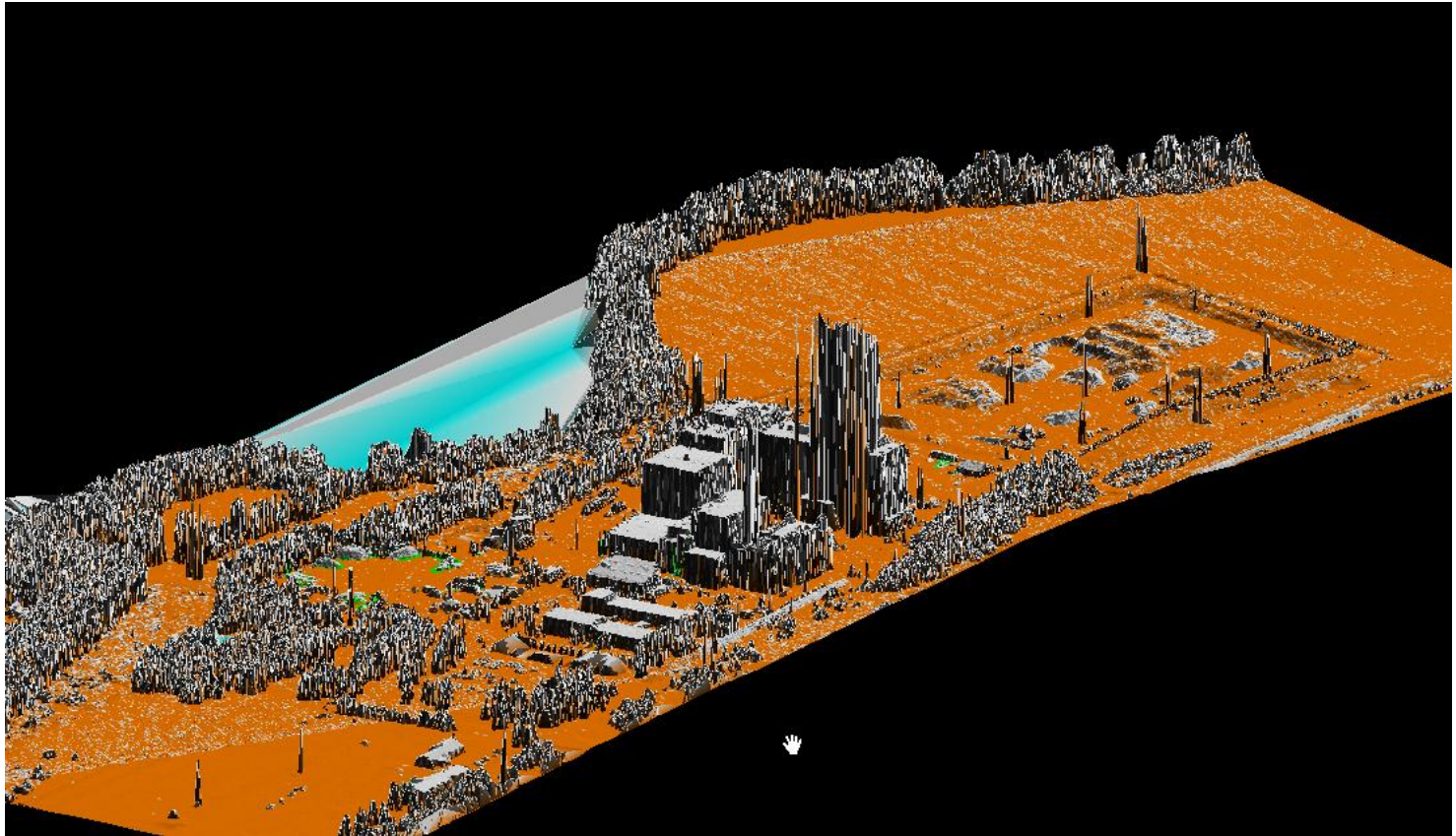
Fineditering av laserpunktmoln

- TerraSolid
- Microstation
- Summit Evolution (stereo)
- Fme
- Google Earth

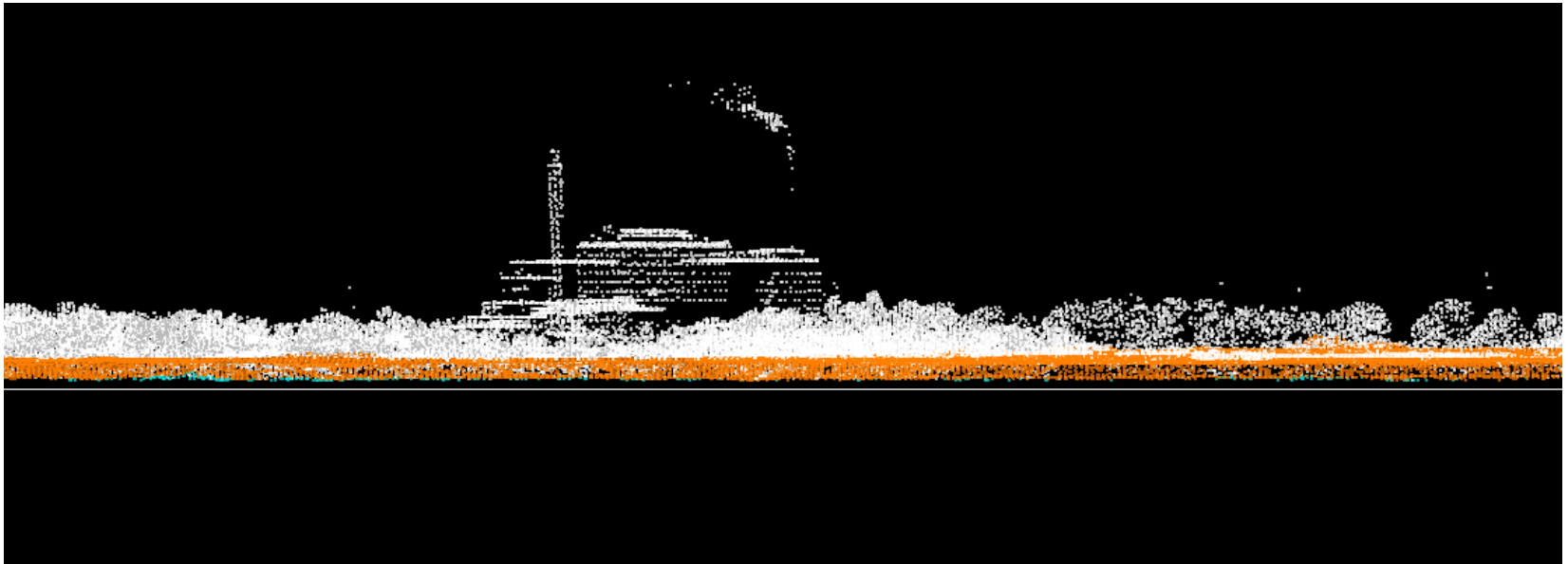
”Vardags”användning av laserdata

- Quantum GIS
 - www.qgis.org
- Fugro viewer
 - <http://www.fugroviewer.com/>
- LAS-Tools
 - <http://www.cs.unc.edu/~isenburg/lastools/>
- Lidar news
 - <http://blog.lidarnews.com/open-source-lidar>

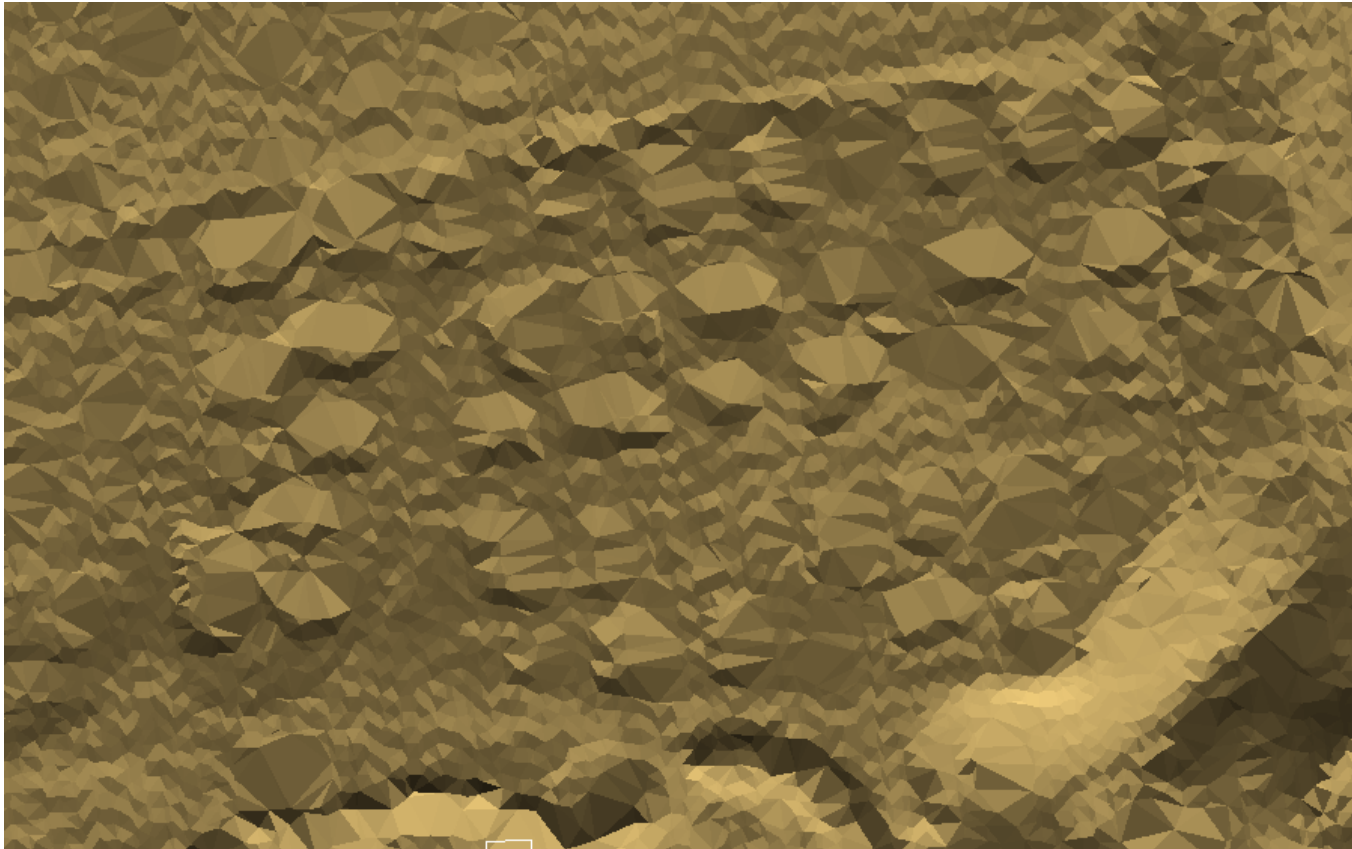
Automatklassad mark-modell



Punktmoln i frontview



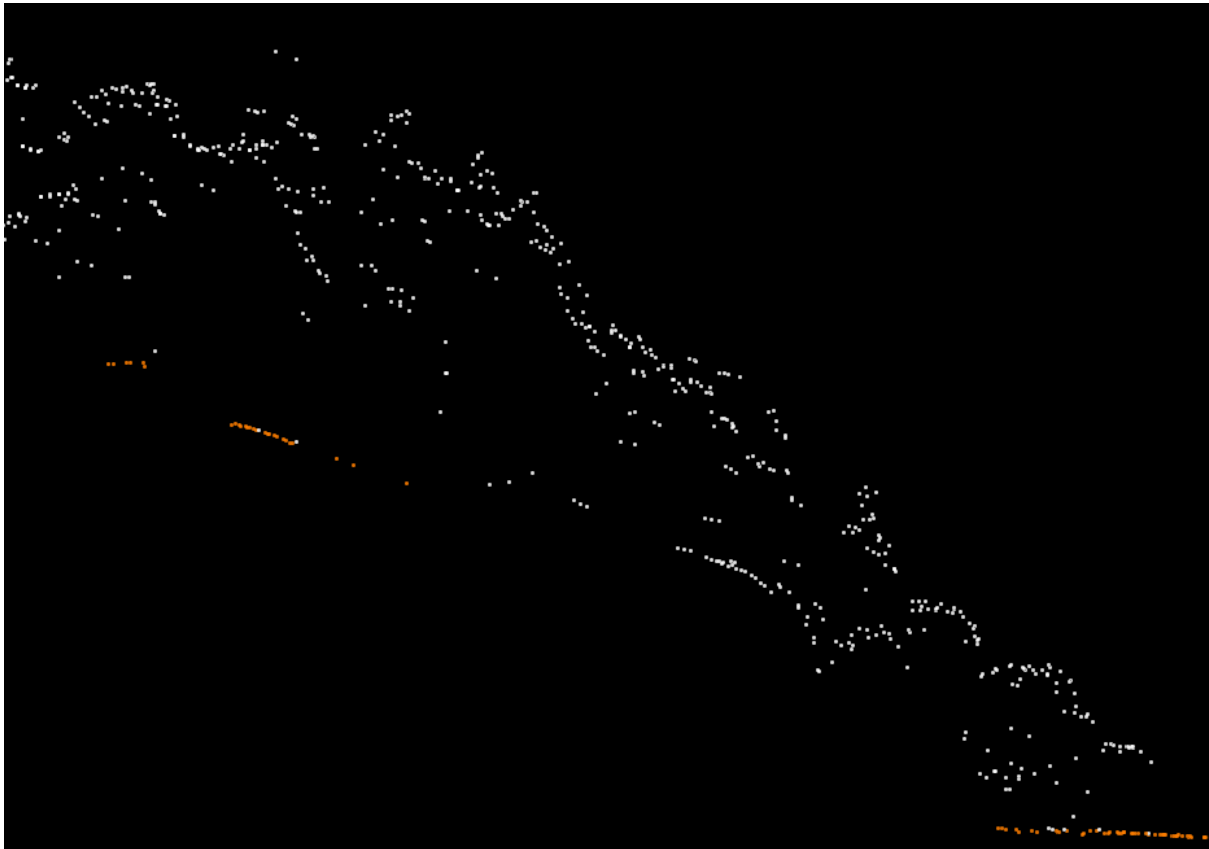
Campingstugor ger fel i markmodell



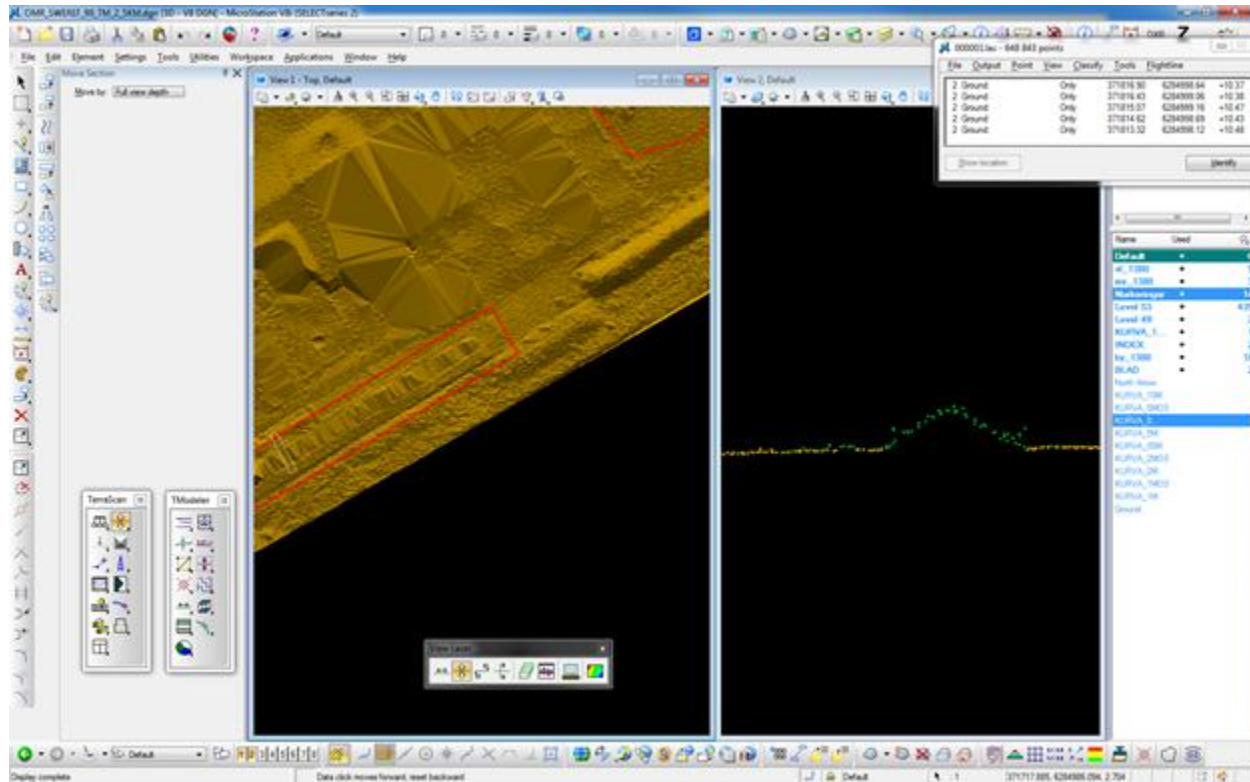
Campingstugor - frontview



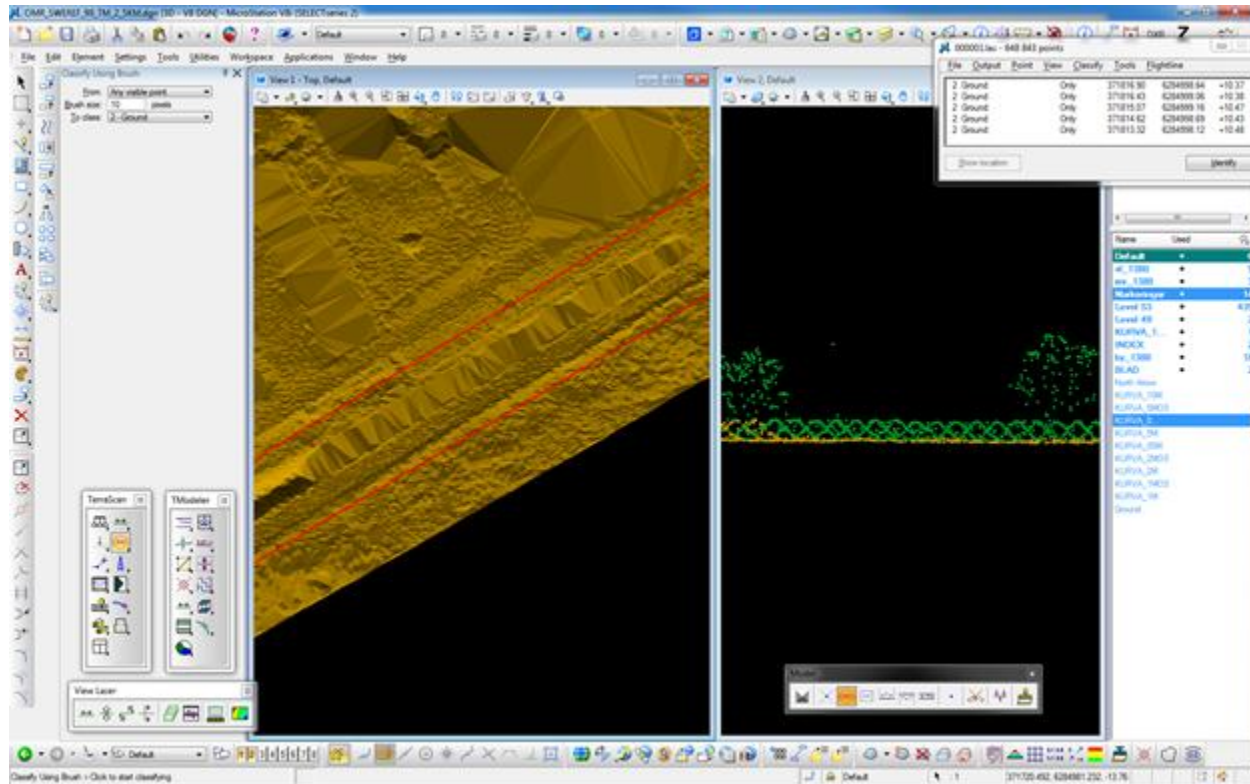
Brant ofullständigt markklassad



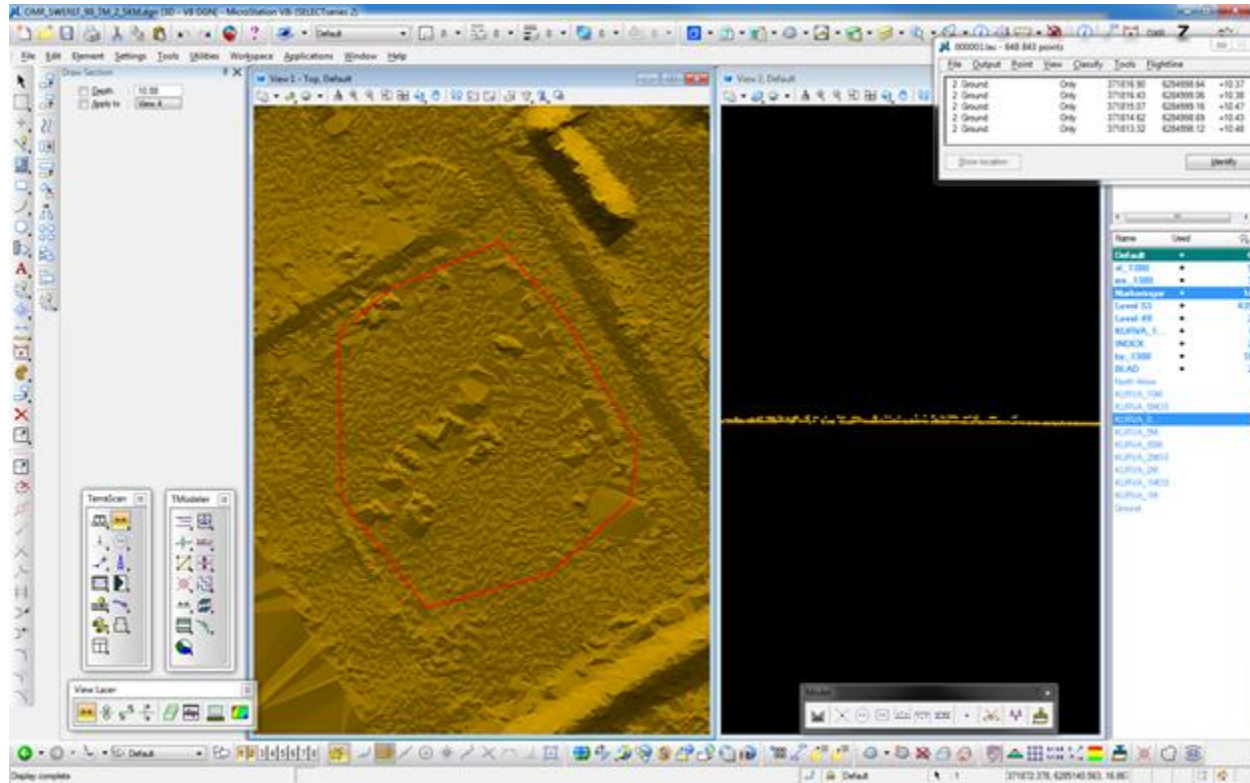
Ofullständigt markklassad vall



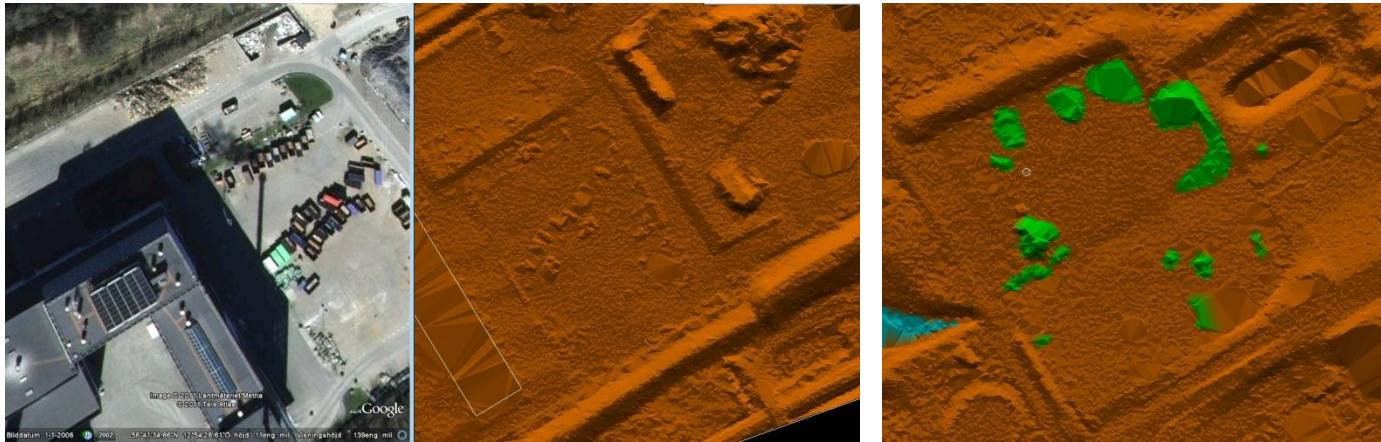
Front view



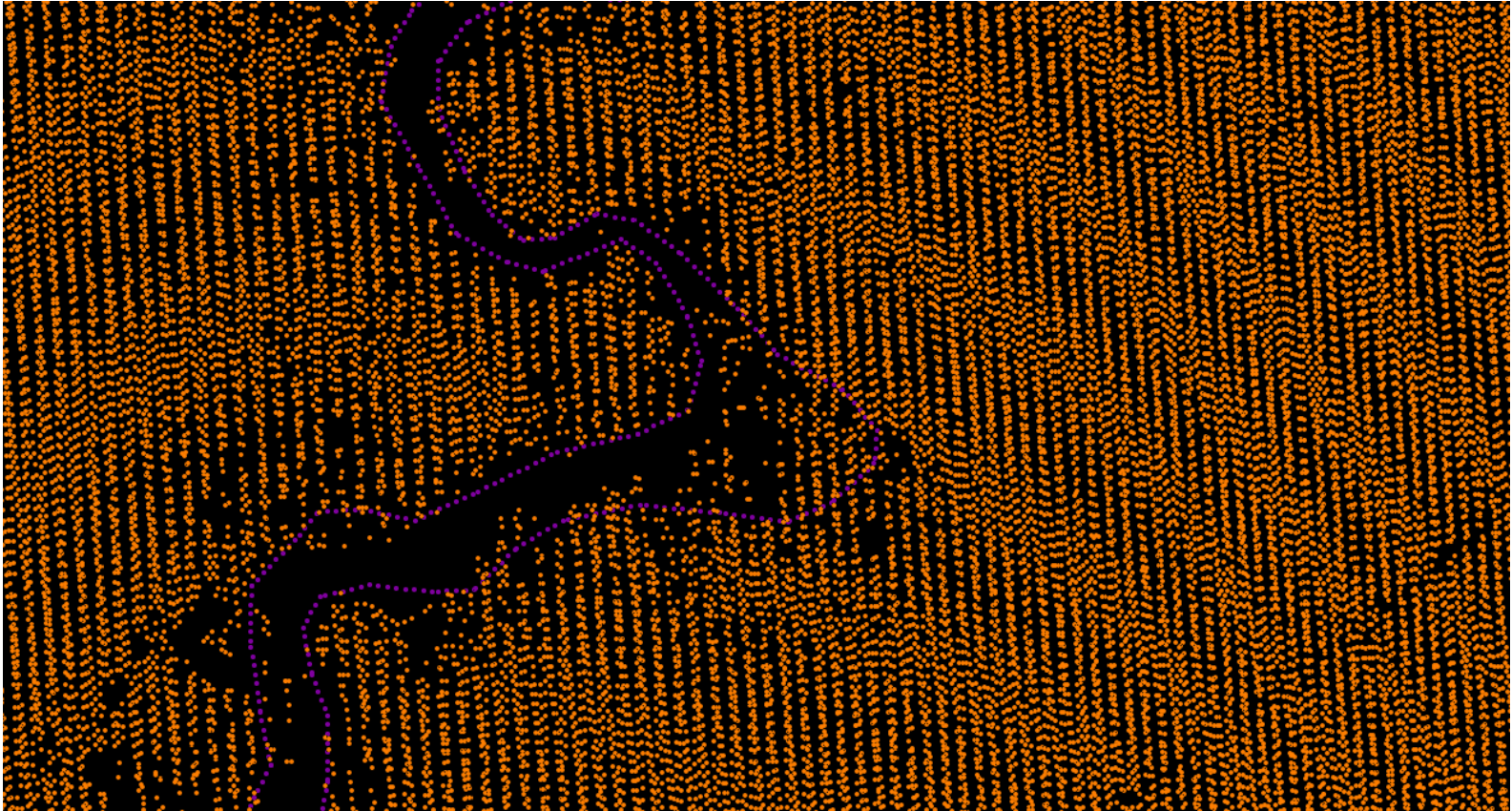
Parkeringsplats



Bilar på parkering editerade förbättrar mark-modellen



Markpunkter maskas bort- brytpunkter tillförs



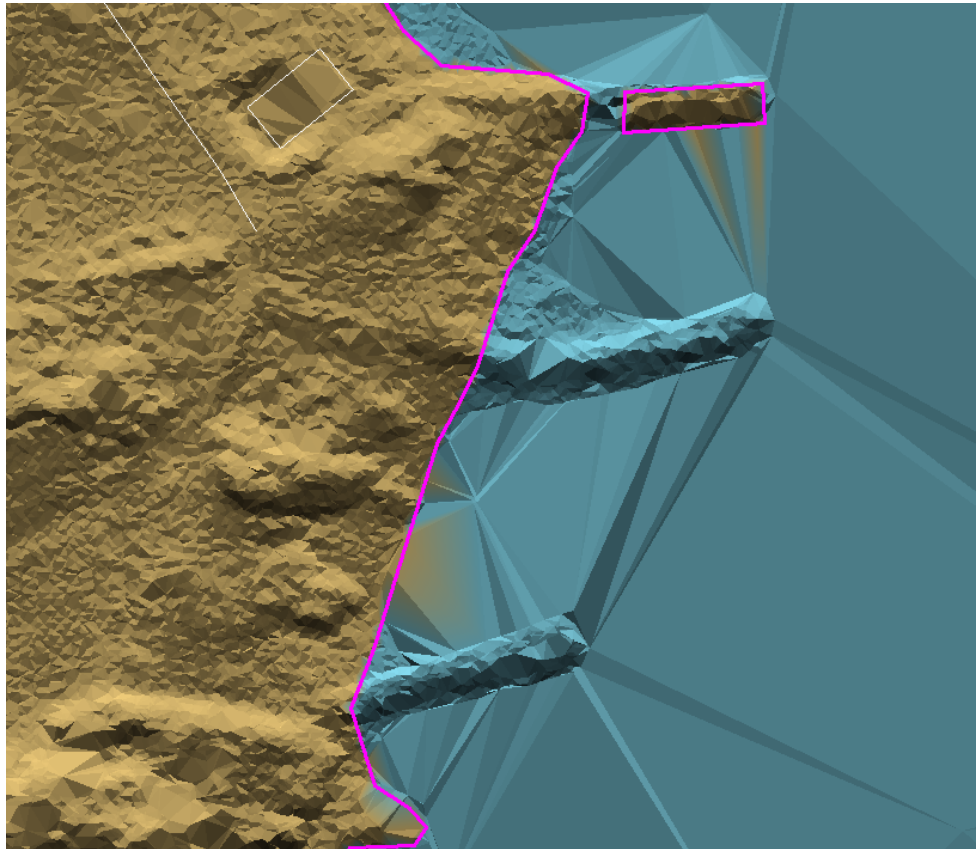
Kontroll i stereomodell och i laserpunktmolnet



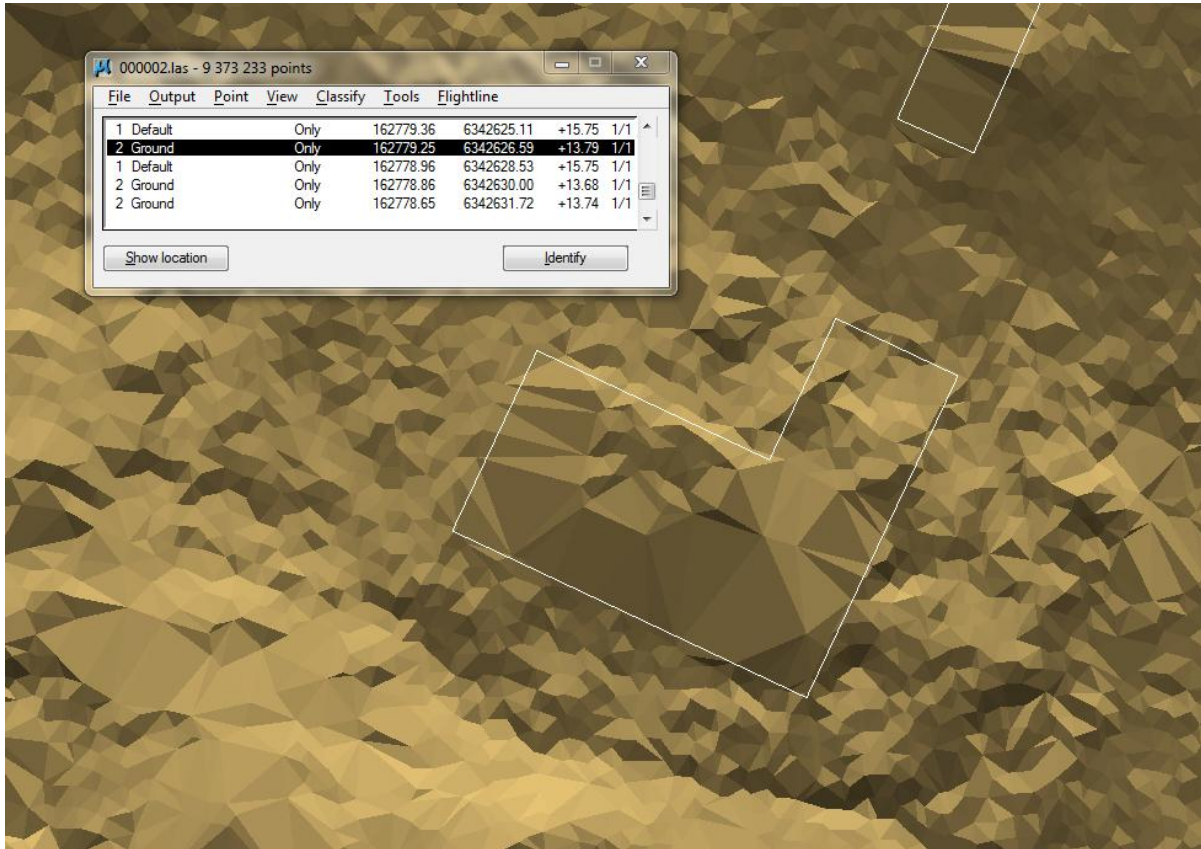
Saknas markpunkter på ö



Mark felklassad med GGD-polygon



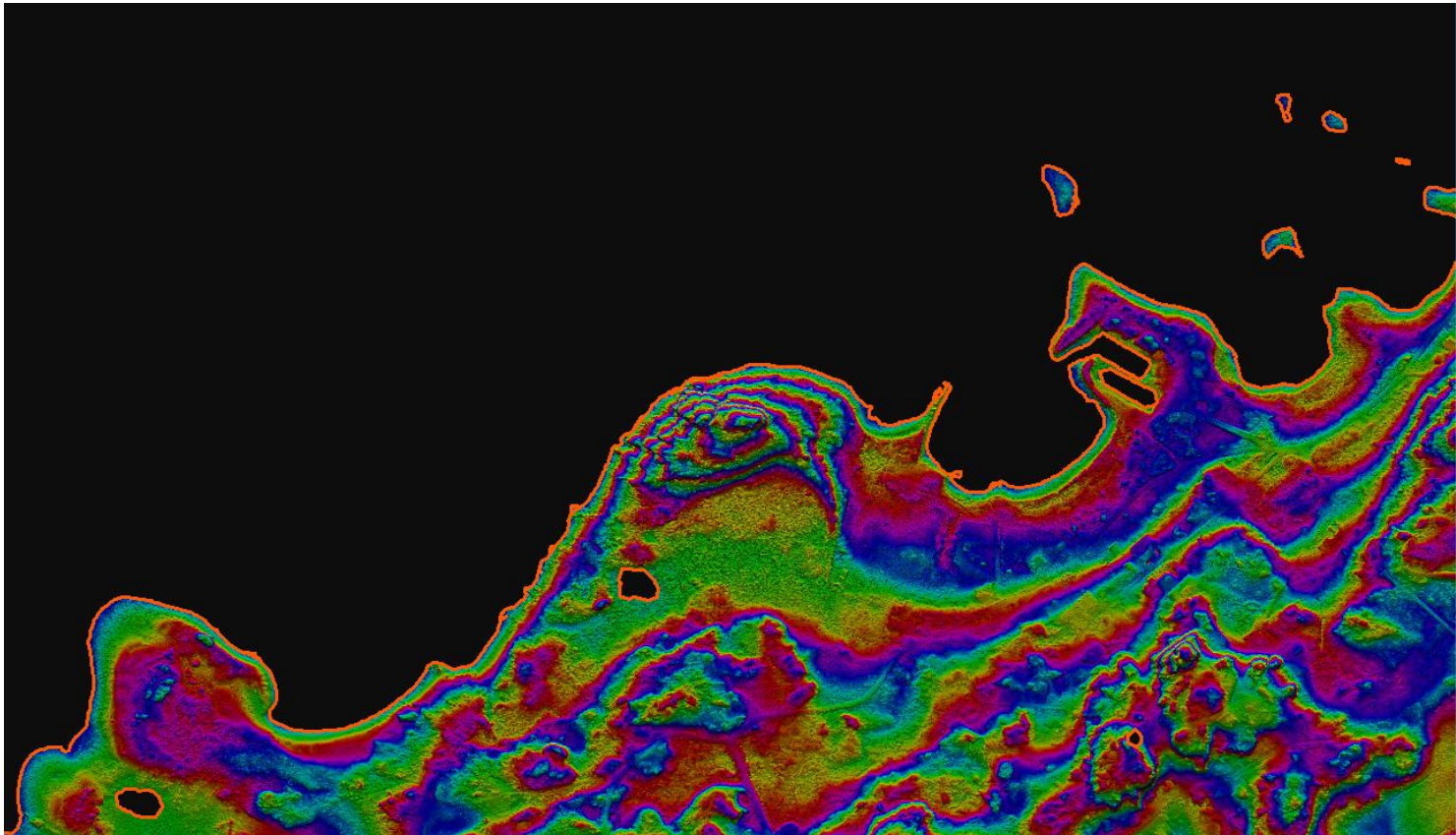
Byggnad under konstruktion ger 1 m för hög markhöjd



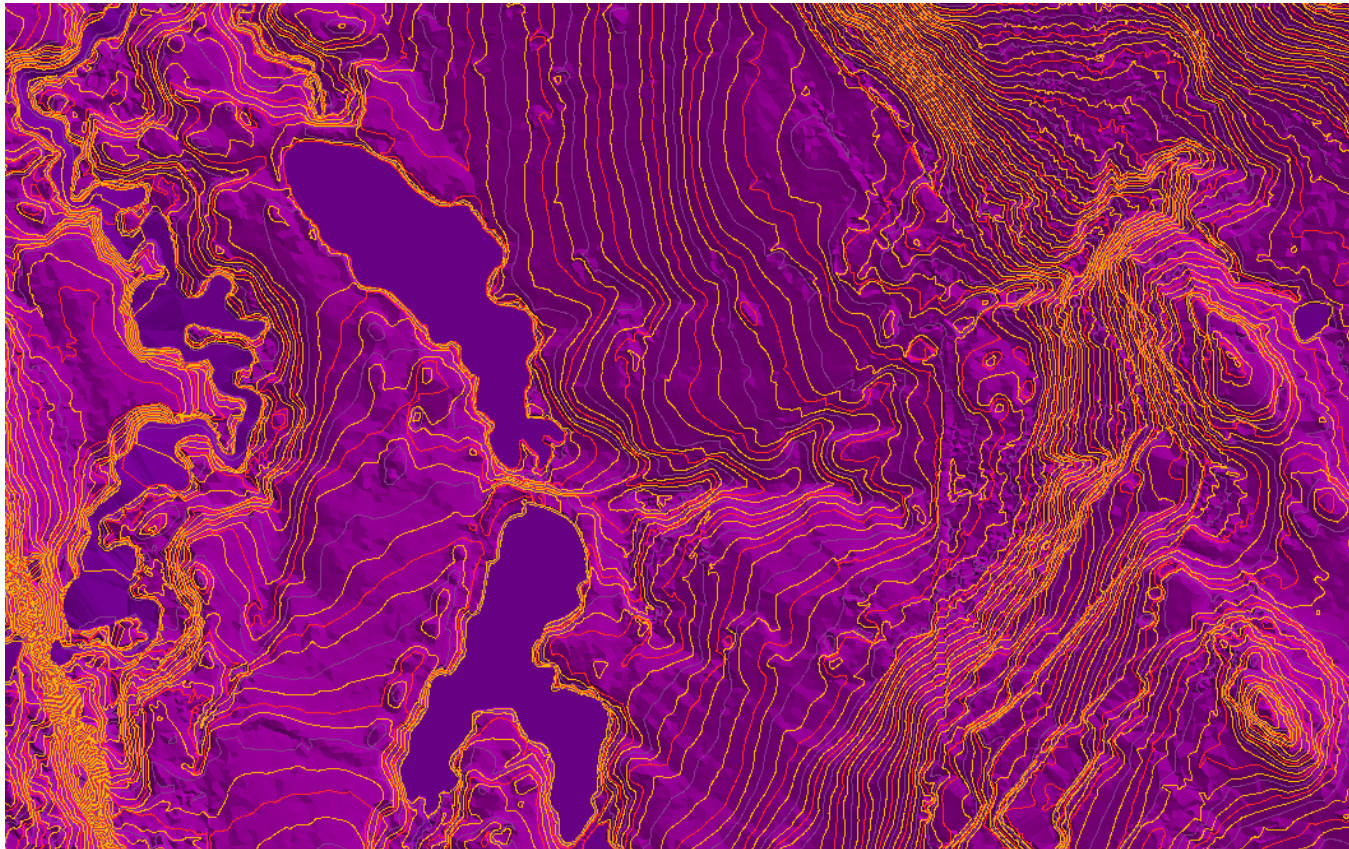
Byggnad under konstruktion i ortofoto



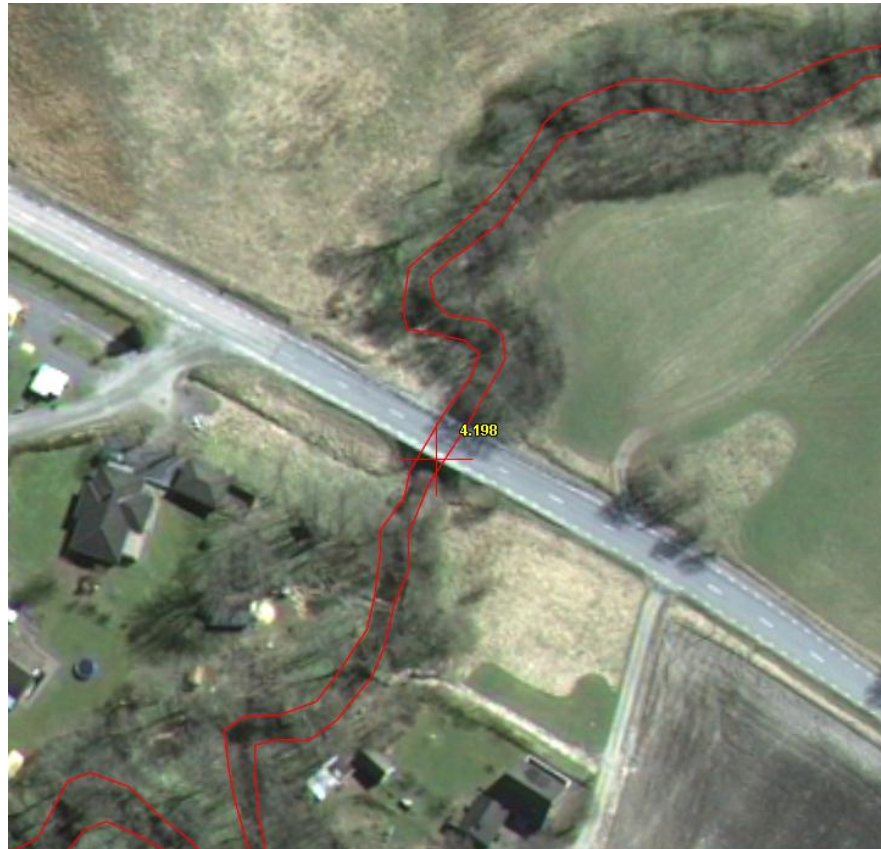
Generera höjdsatta vattenpolygoner



Kurvor - shaded surface - ground



Addera brytlinjer ur stereomodell



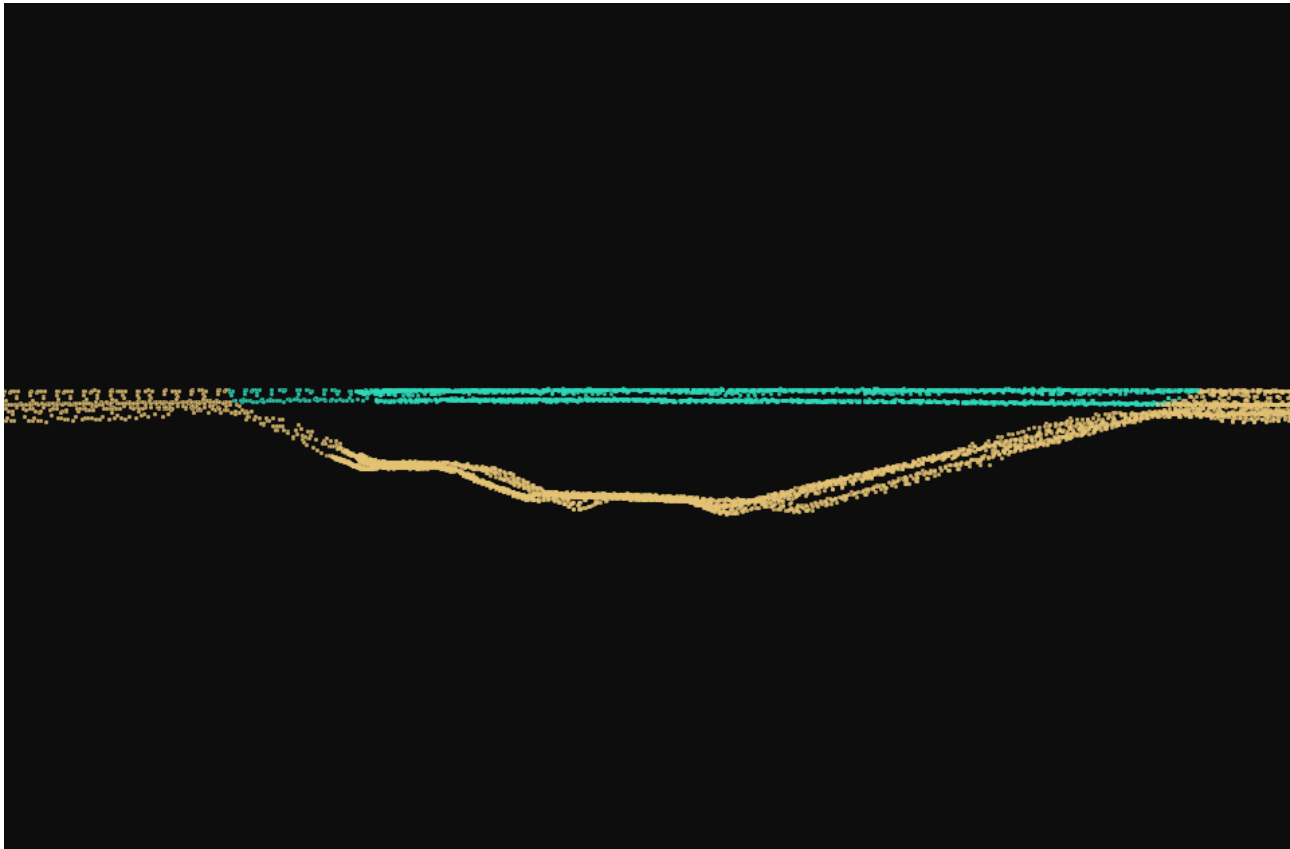
Broar före editering



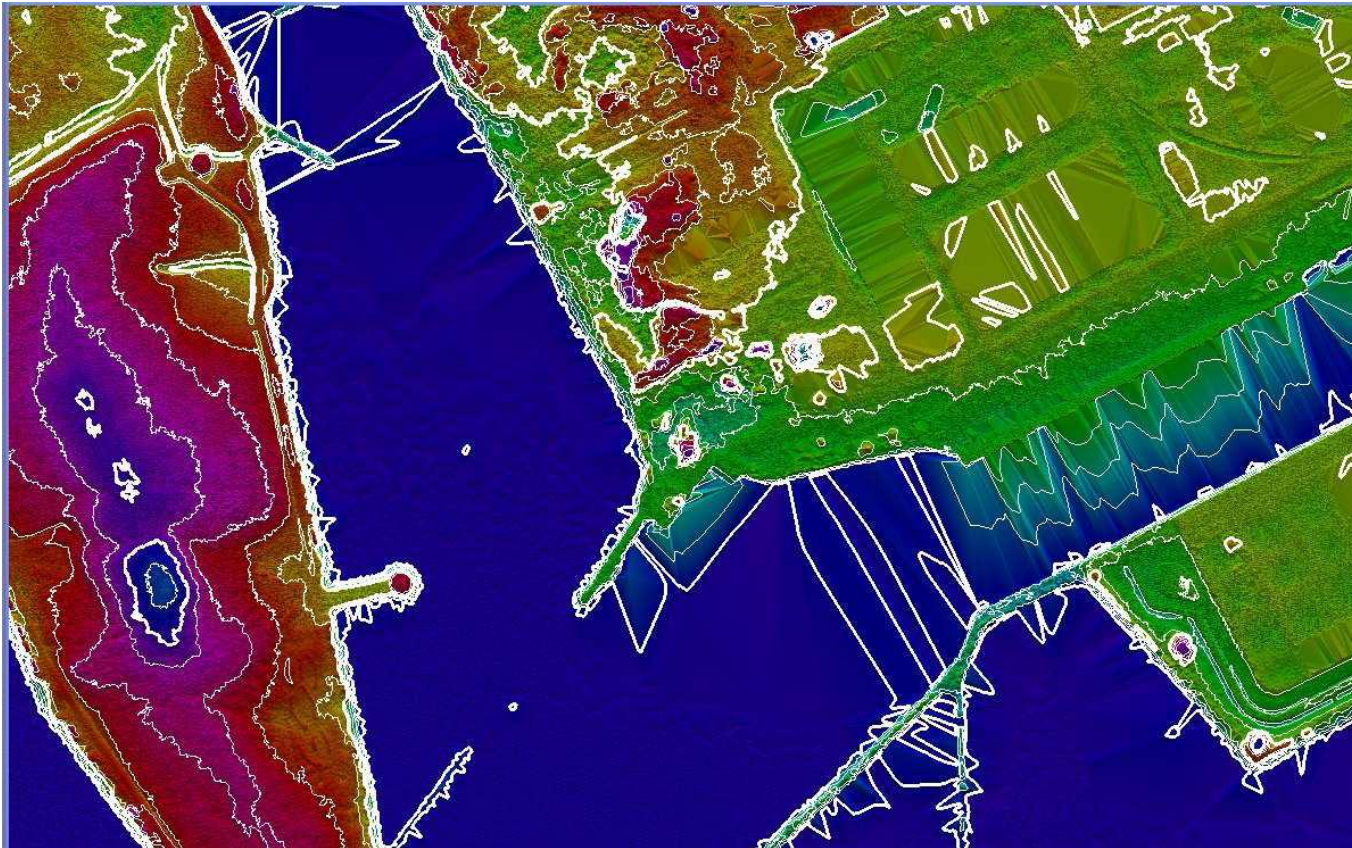
Broar efter editering



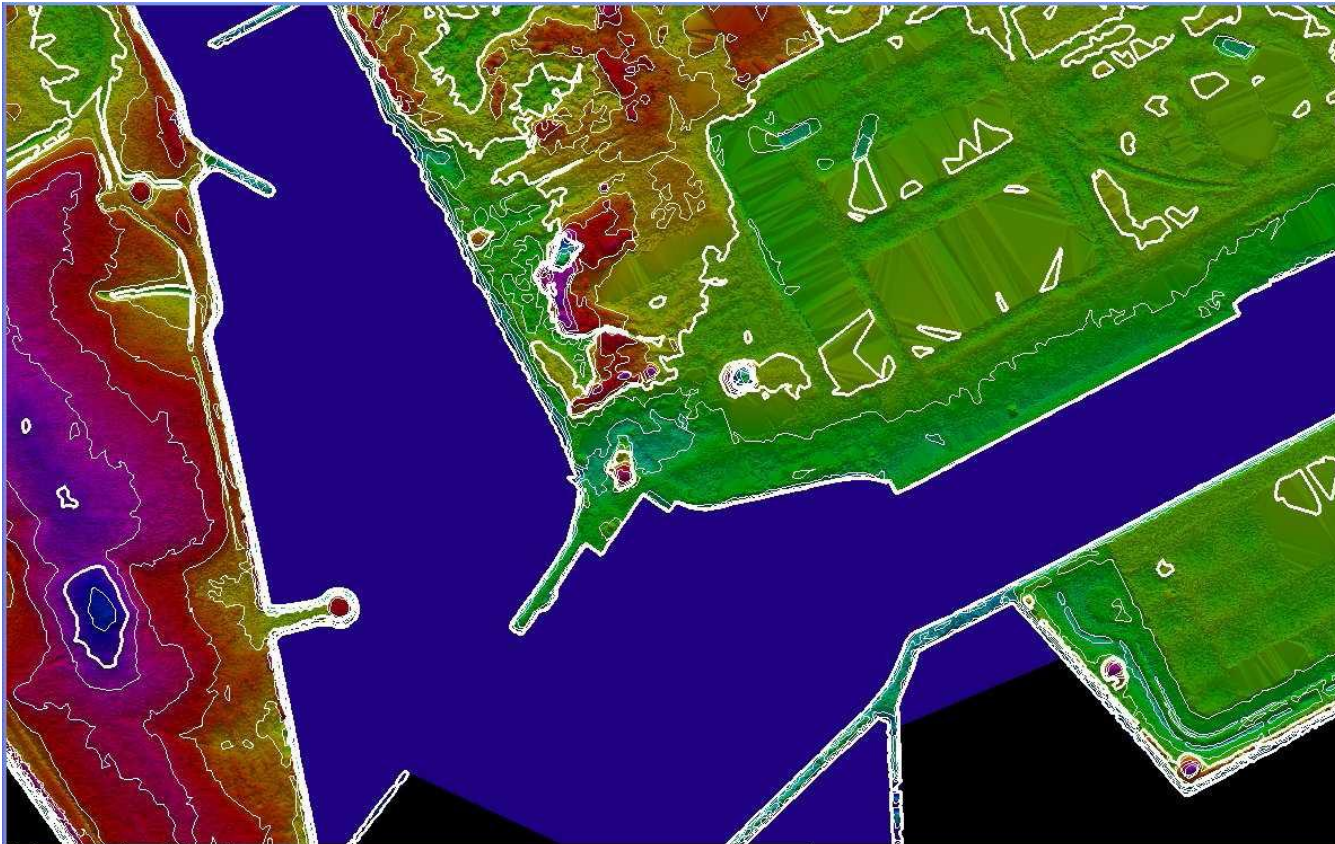
Bro – front view



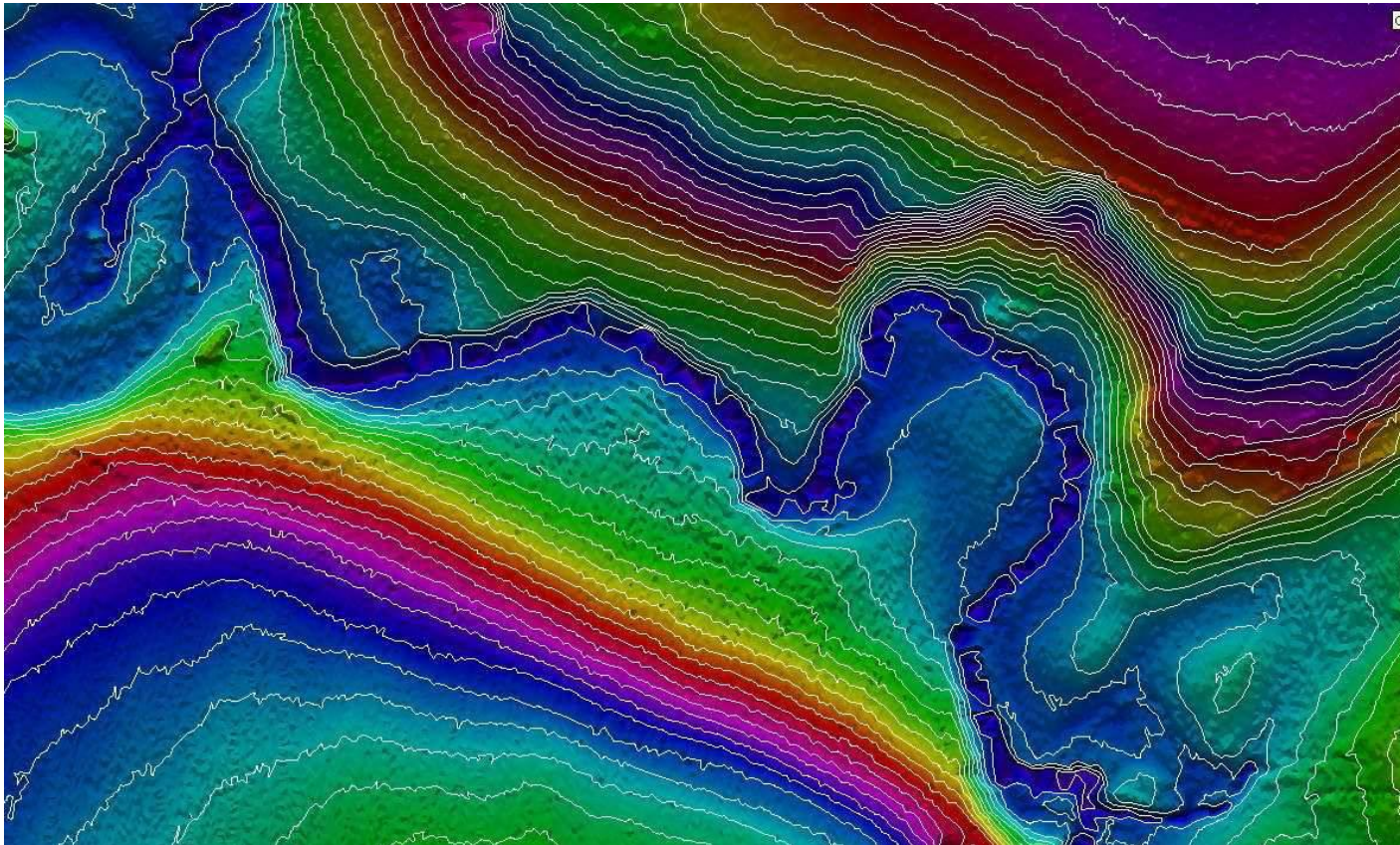
Före editering



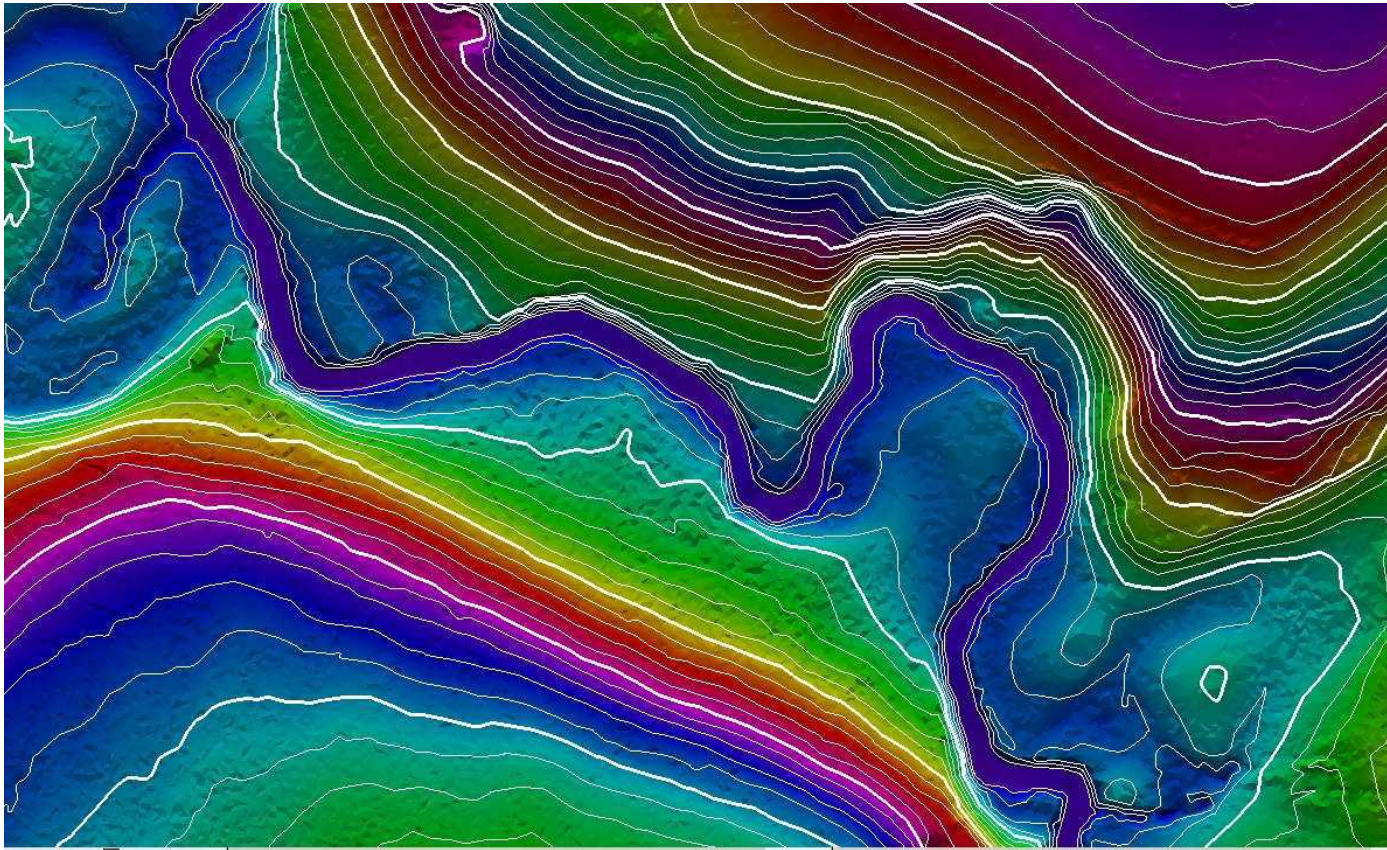
Efter editering



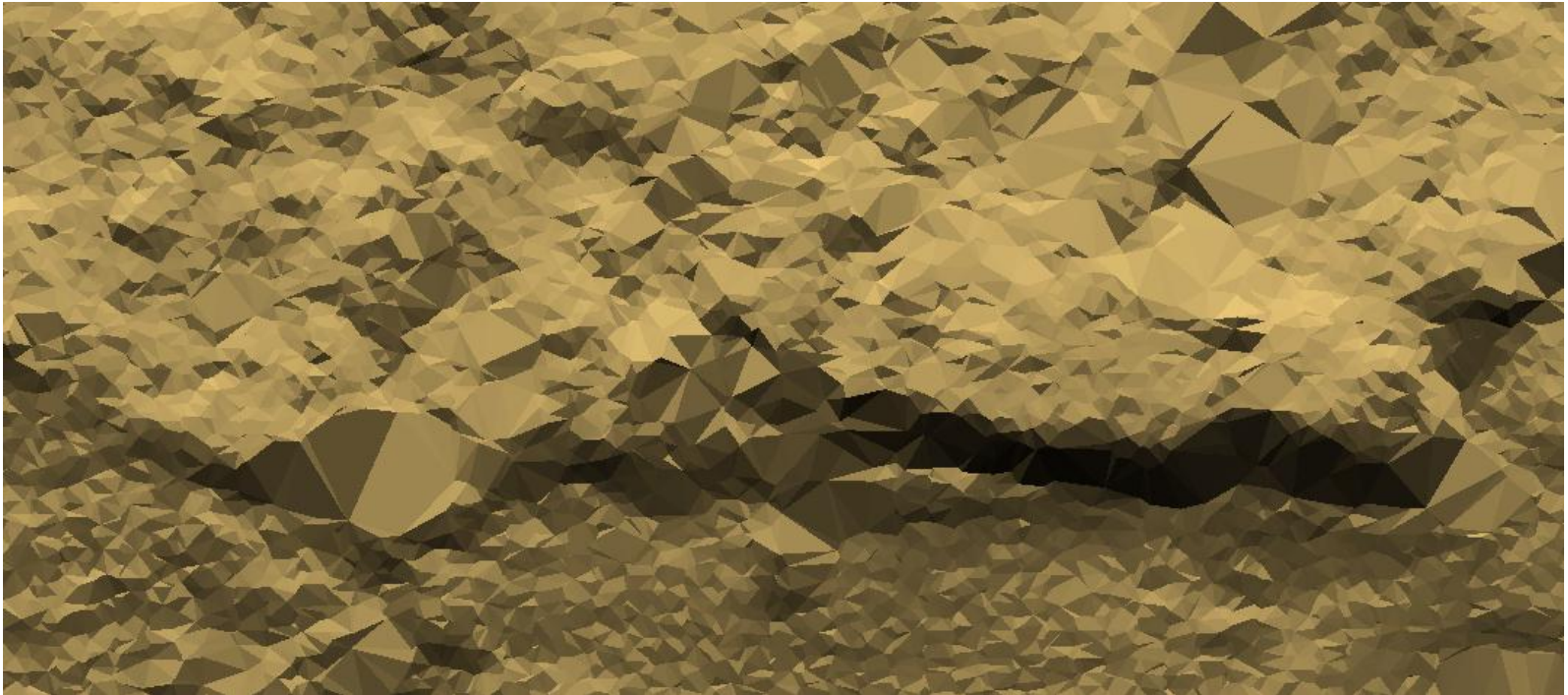
Utan vattenpolygon



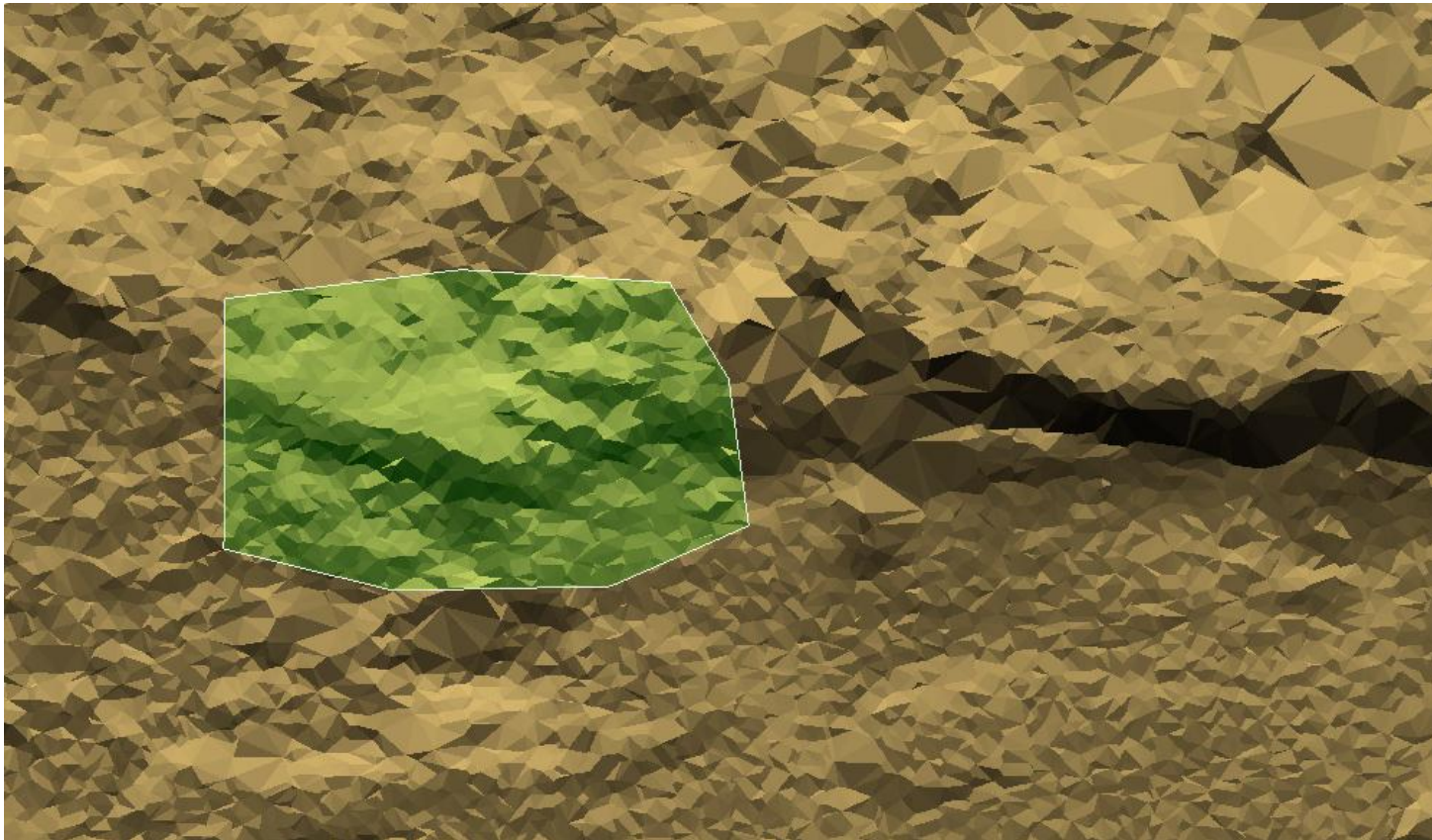
Inklusive vattenpolygon och editering i Terrasolid



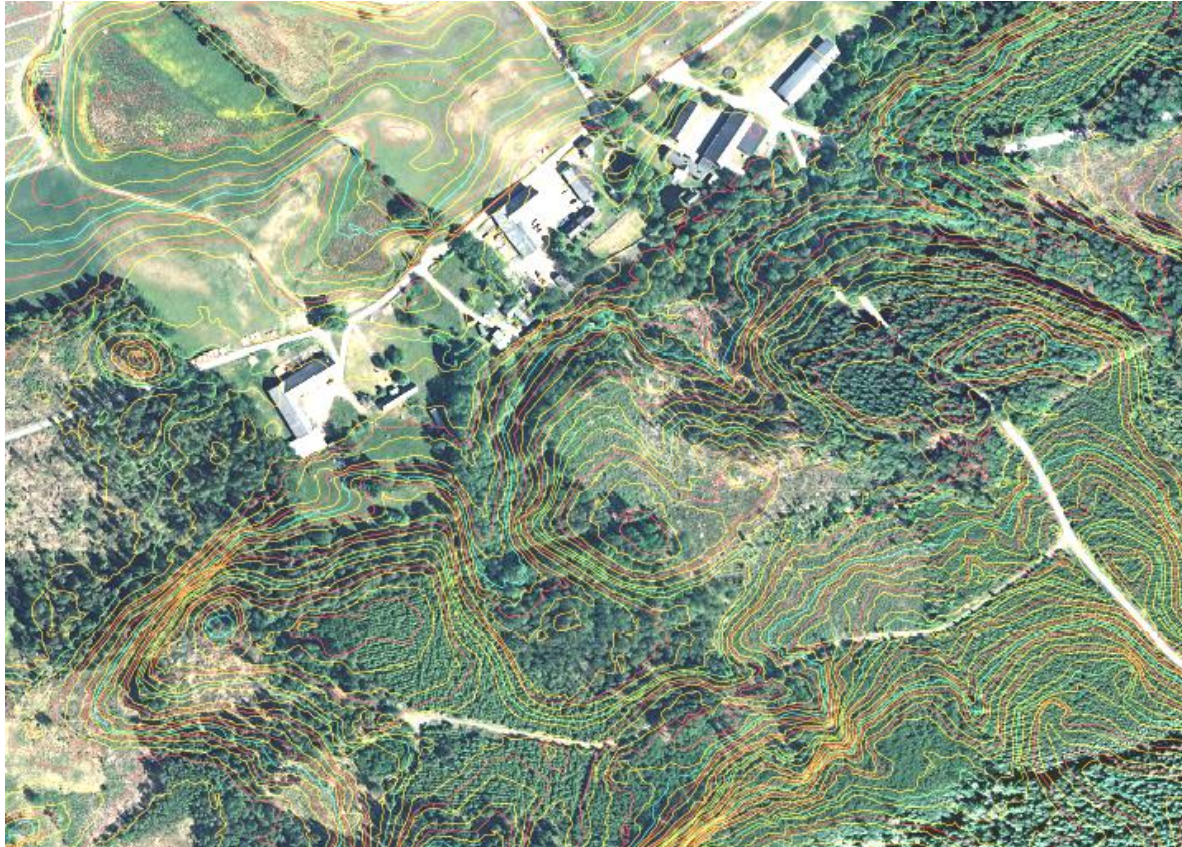
Brant före editering



Brant efter editering



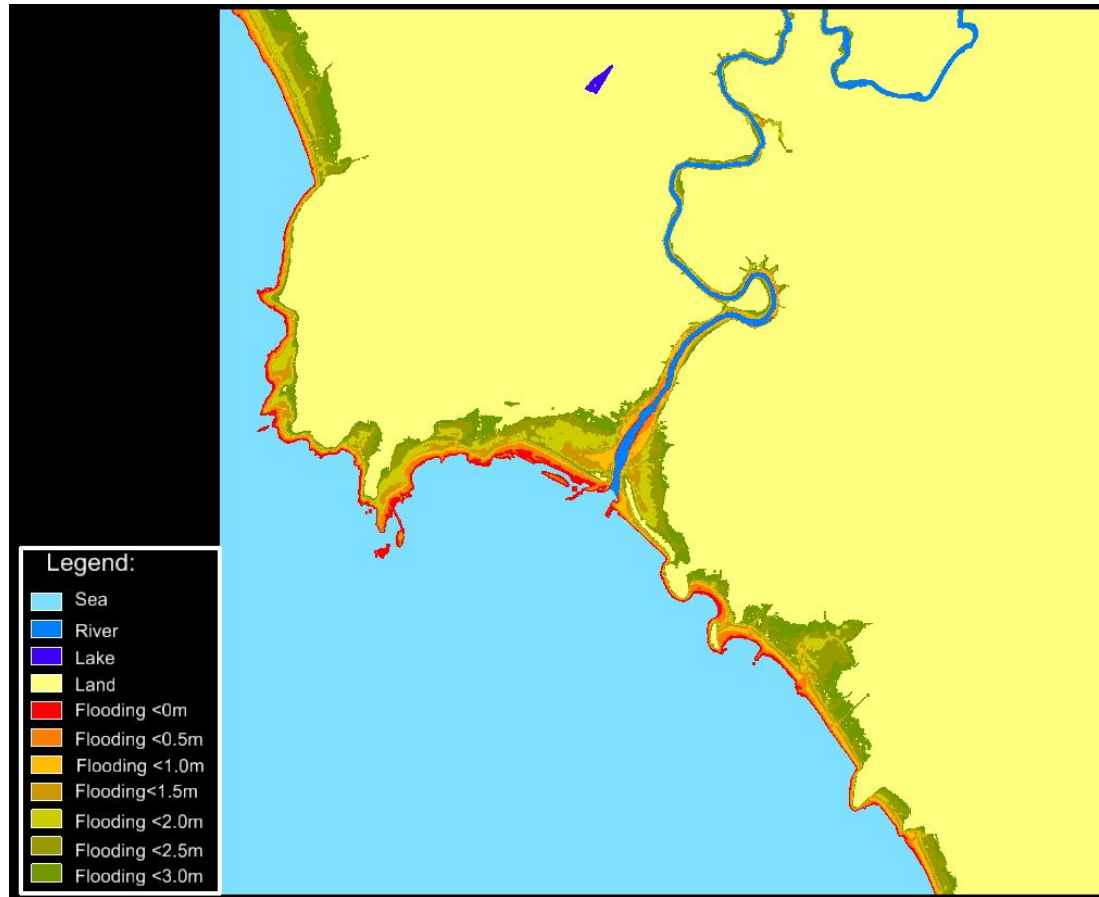
Produkter ur editerad mark-modell



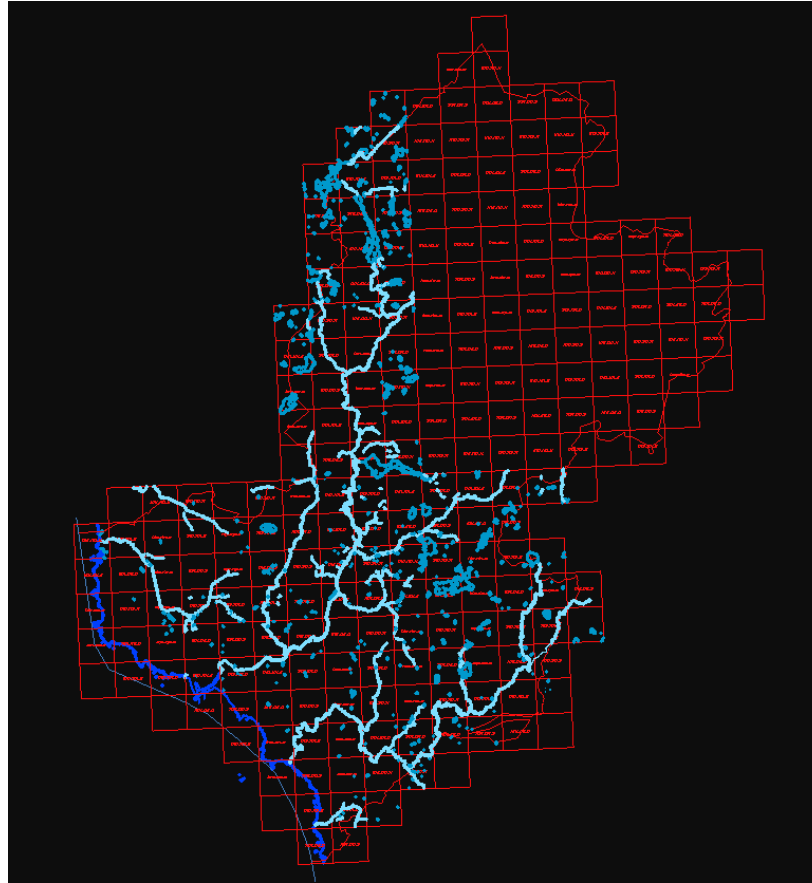
Grid



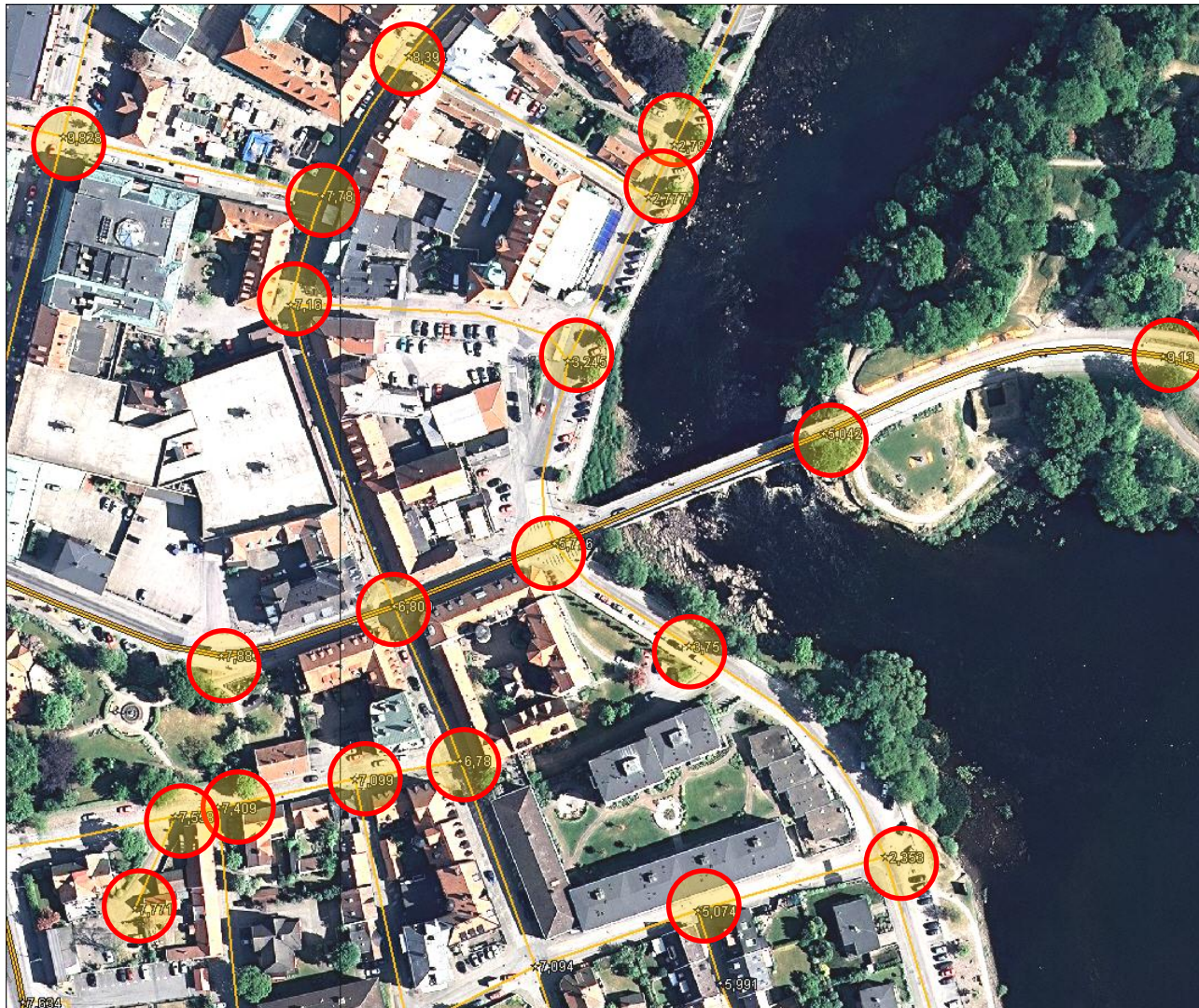
Översvämningsskurvor



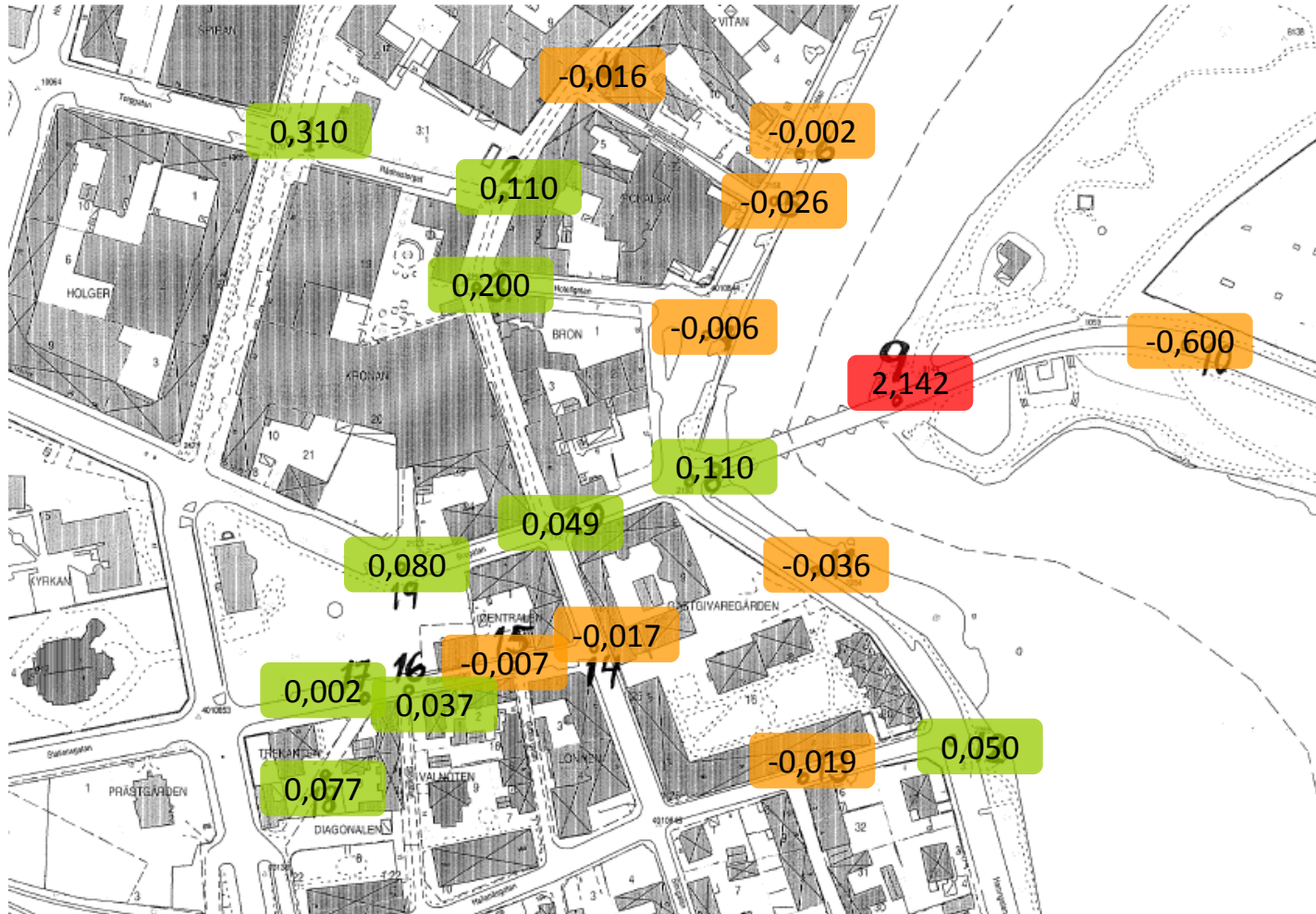
Höjdsatta vattenpolygoner



Kontrollmätning av väg-höjder



Resultat av kontrollmätning av väg-höjder



Kontakt buller Vectura

henrik.naglitsch@vectura.se

010-4845025

Kontakt GIS Metria

erik.lundborg@metria.se

010-1218337

Kontaktperson NNH Metria

anders.huhta@metria.se

010-1218367

